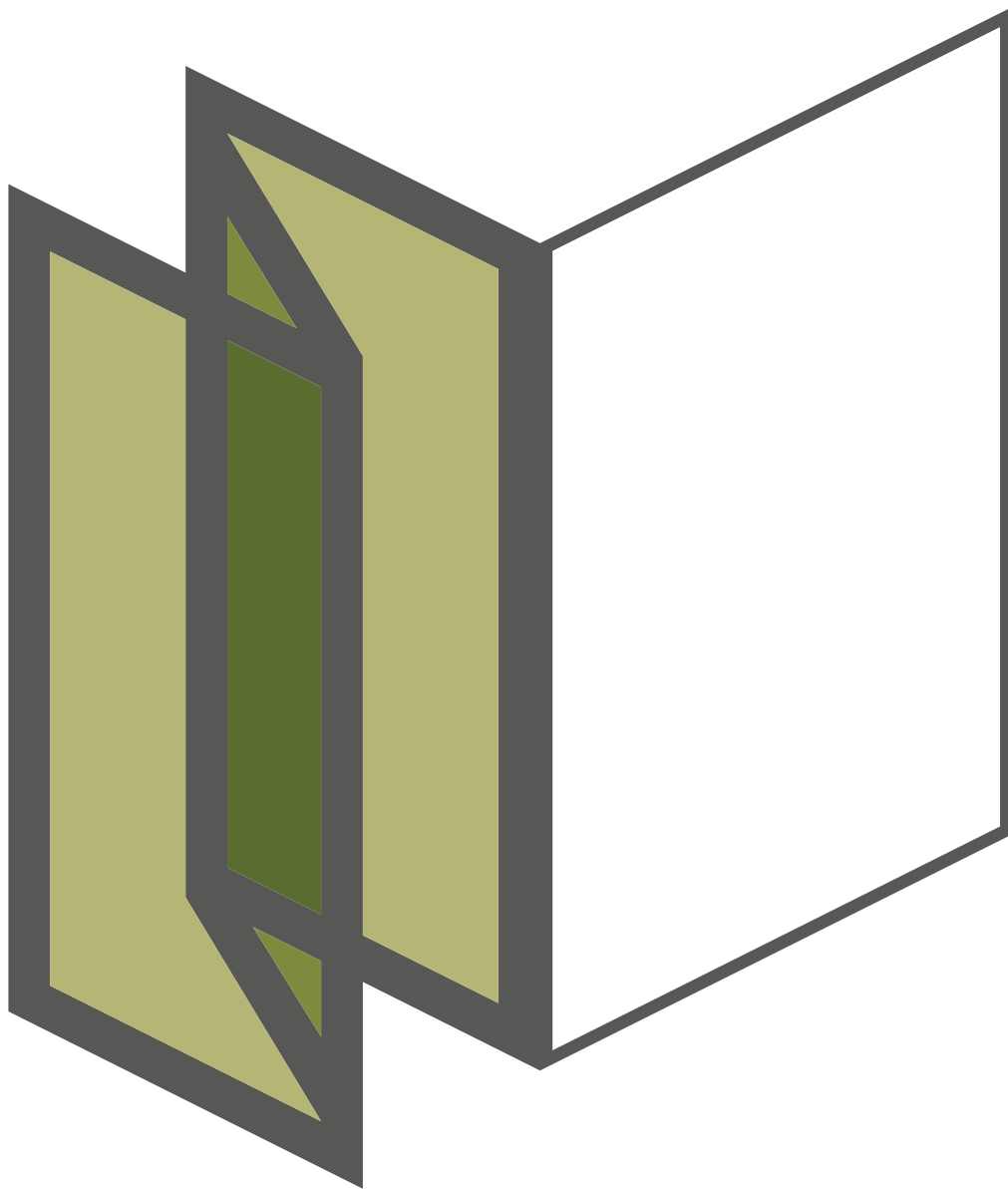


ECOLINE · HIGHLINE

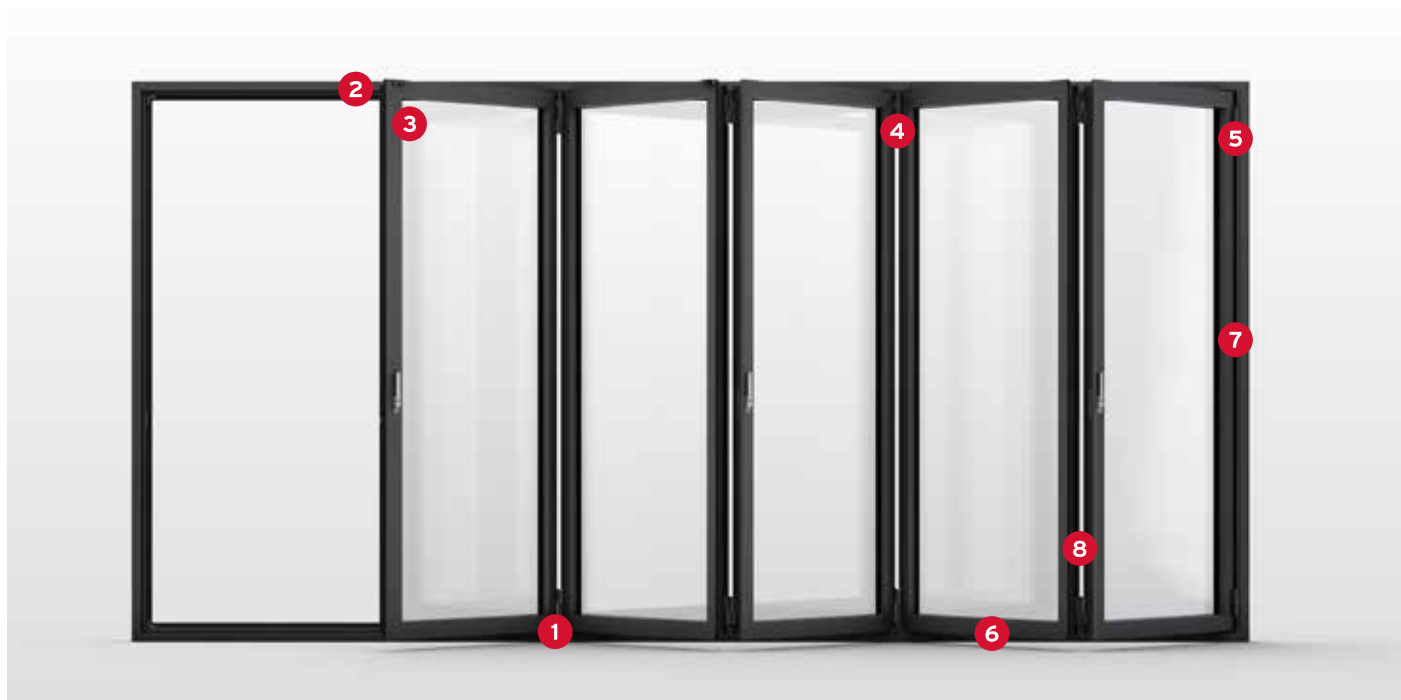
Bi-Folding Door



PRODUCT DATA SHEET

BI-FOLDING DOORS

ECOLINE · HIGHLINE



1

RUNNER ASSEMBLY

- Stainless steel runner assembly with double-layered groove bearings
- Smooth and quiet operation
- Optimum load transfer
- Extremely low-maintenance and non-wearing



2

LOCKING

- RC2 version available
- 24 mm upward and downward stroke in the frame
- Optional linking to security system
- Concealed cable routing



3

„COMFORT SNAP“ PANEL CATCHES

- Locks open swing panel in place against the next folding panel
- Functional catch allows the panels to be opened and closed easily





4

**„EASY CLEAN“
REMOVABLE HINGE PIN**

- Easy cleaning even with high floor-to-ceiling dimensions
- New integral locking technology with error device
- Captive hinge pin which cannot drop out accidentally



6

3S TRACK GUARD

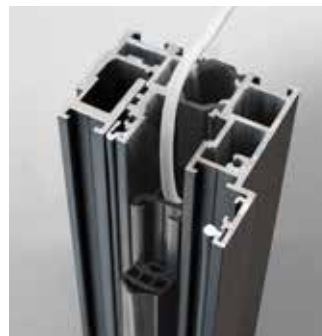
- High quality clip-on aluminium track guard
- Intergrated locking channel cover
- Protects from ingress of dirt



5

ADJUSTMENT PROFILE

- Simple adjustment for panel tolerances
- Adjustment of panels from one single profile
- No break to sealing



7

FRAME COVER

- Tasteful, flush cover of subframe fixing screw heads
- Concealed cable routing cover possible



8

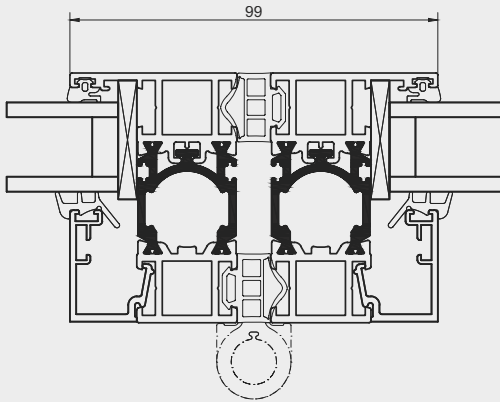
**„TWINX“ CONCEALED PANEL
CENTRING MECHANISM**

- Elegant slimline panel design throughout with even joints
- No break to sealing face
- Constant sealing pressure

BI-FOLDING DOORS

ECOLINE · HIGHLINE

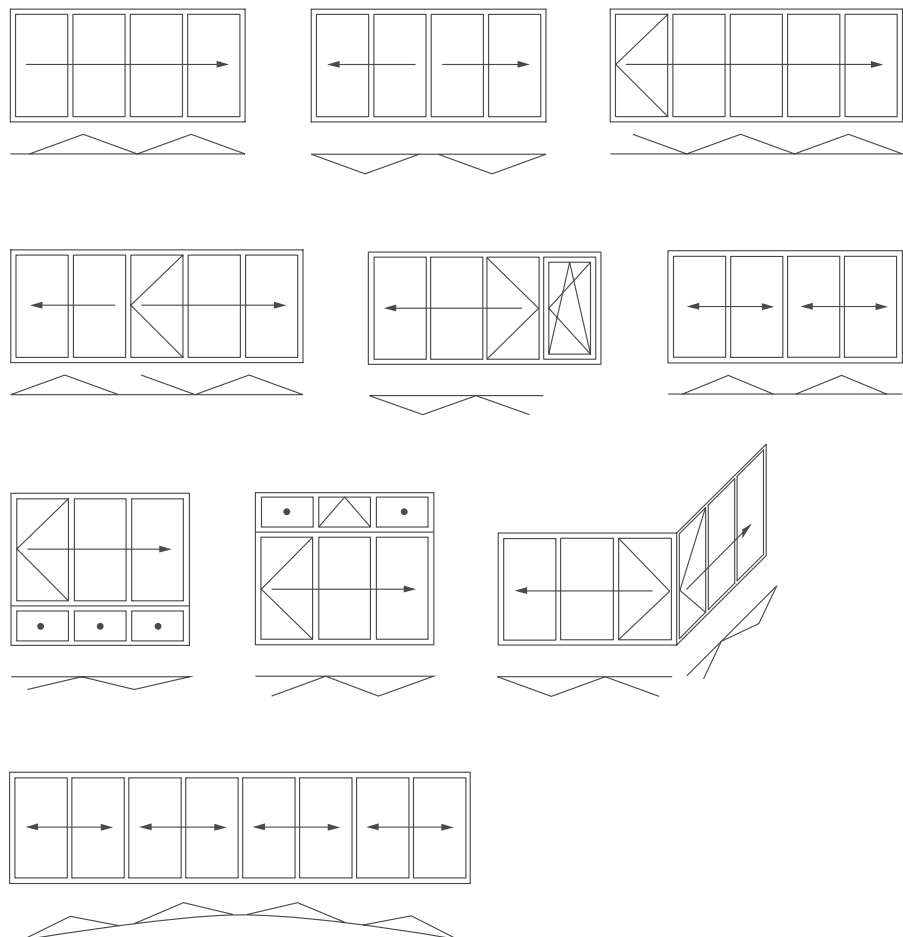
The centre piece of the bi-folding door system



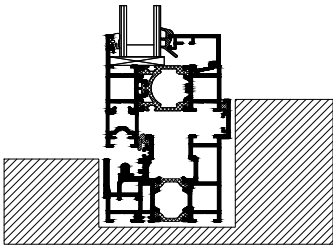
The new bi-folding door system is available in two versions: Ecoline and Highline. Despite their difference in unit thicknesses of 67 and 84 mm, the new bi-folding system with its 99 mm sight line offers an unusual elegant slender appearance throughout. What makes this possible is its centre piece: the bionicturtle®, a multi-functional thermal-break which combines

various design aspects. The design of this profile form provides the basis for the stability of the slender upright profiles. In addition, it accommodates provisions for locking mechanism as well as door furniture and guarantees perfect insulation.

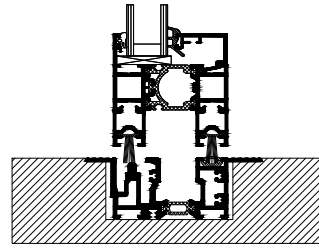
Configuration Examples



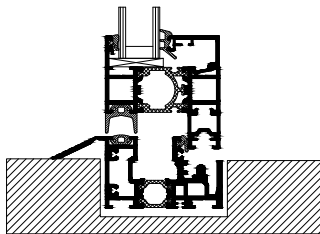
Floor Track Versions



- Floor track suitable for living accommodation
- With upstand

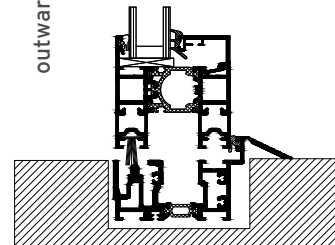


- Recessed floor track
- Without upstand for wheelchair access



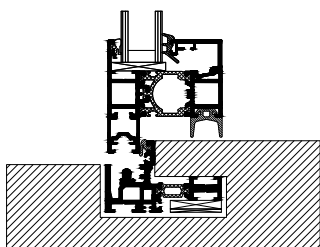
inward opening

- Floor track suitable for living accommodation
- For wheelchair access with 14 mm upstand

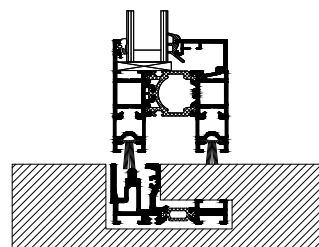


outward opening

- Floor track suitable for living accommodation
- For wheelchair access with 14 mm upstand



- Mini floor track (29 mm wide)
- For wheelchair access with 14 mm upstand



- Mini floor track (29 mm wide)
- For wheelchair access with level threshold

BI-FOLDING DOORS

ECOLINE · HIGHLINE

System Features

PROFILE SYSTEM

- Highly thermally insulated modular aluminium profile system available in two unit thicknesses:
- 67 mm Ecoline and 84 mm Highline
- Floor mounted. Therefore little load bearing capacity of lintel required
- Angular profile design
- Minimum sight lines of 99 mm at the panel joints
- „bionicturtle®“, a GFR Polyamid single piece, multi-functional thermal break profile
- Loose shear bond in insulating web compensating for thermal loads
- Controlled drainage
- Runner and guide tracks integrated into the system
- Separate levels for runners and locking
- Floor tracks (for wheelchair access and living accommodation) available
- Concealed cable routing can be integrated

SEALING SYSTEM

- Sealing by two wrap-around lines of defence with constant gap size and even sealing pressure between panels
- Sealing faces are not broken by door furniture
- Skinned foam seals with excellent sliding properties
- Air infiltration barrier seal for enhanced U values as option
- Up to three lines of defence against ingress possible

CONFIGURATION OPTIONS

- Panels are inward or outward folding and can be designed to slide to the right or left
- Floor tracks without upstand to DIN 18040 (for wheelchair access)
- For level thresholds, mini floor tracks are possible
- RC2-/RC2N burglar resistance optional
- If folding panel pair is hinged on frame side, tilt and turn panels can be integrated with concealed door
- Folding, tilting, tilt and turn or fixed units can be combined in one single frame with continuous floor track by means of an integrating profile and modular design.
- Single frame installation for mounting of folding system on parapet even with transom windows now

DOOR FURNITURE

- No protruding runner and guide tracks
- Concealed door furniture for one-handed operation
- For increased wind loads additional concealed panel centring facility „TwinX“ can be integrated
- System hinges for increased panel weights available
- Integrated system adjustment in subframe rebate outside sealing face
- Optimised design of the stainless steel runner track together with the hourglass-shaped runners allow for an unguided runner assembly
- Quiet runner mechanisms with extremely long life stainless steel ball bearings and bearing surfaces
- Easy, smooth and wear-resistant runner assemblies with double row deep groove ball bearings and integrated anti-prying guard
- High-grade stainless steel Solarlux designer handles
- Lockable one-hand-operation by means of special gearing with 24 mm throw
- Entry / exit panel can be supplied with lever-handle-operated multi-point locking system and profile cylinder lock
- Captive hinge pins
- „Easy Clean“ removable hinge pins with convenient release mechanism and operating error prevention device for cleaning the outside of panels which open to the inside of folding glass door units.
- Specific locking points at spaced intervals allow the use of the removable hinge pin on paired as well as non-paired folding glass doors
- Lock monitoring by means of Reed contacts and concealed cabling
- Patented „Comfort Snap“ panel catches with specified locking sequence
- Installation of the subframe profiles and the floor track on load-transferring plates with centering grooves and sealing cushions is optional
- Additional covering of the fixing screws in the frame rebate








ENVIRONMENT

- Sustainable manufacturing
- Certified waste disposal to DIN EN ISO 14001: 2009

MANUFACTURING FACILITY








- Internal production inspection
- Tested to DIN EN 1090 execution class EXEC1 and EXEC2
- Certified to DIN EN ISO 9001

Ecoline Features

	Resistance to wind load to DIN EN 12210	B4
	Protection against driving rain to DIN EN 12208	8A
	Air permeability to DIN EN 12207	3
	Mechanical durability to DIN EN 1191/12400	2
	Burglar resistance to DIN EN 1627-1630	RC2/ RC2N
	Sound insulation class to DIN EN ISO 10140-2	R' _w bis 40 dB
	Thermal performance of windows, doors and shutters to DIN EN ISO 10077-1	U _w ≥ 1,1 W/m ² K

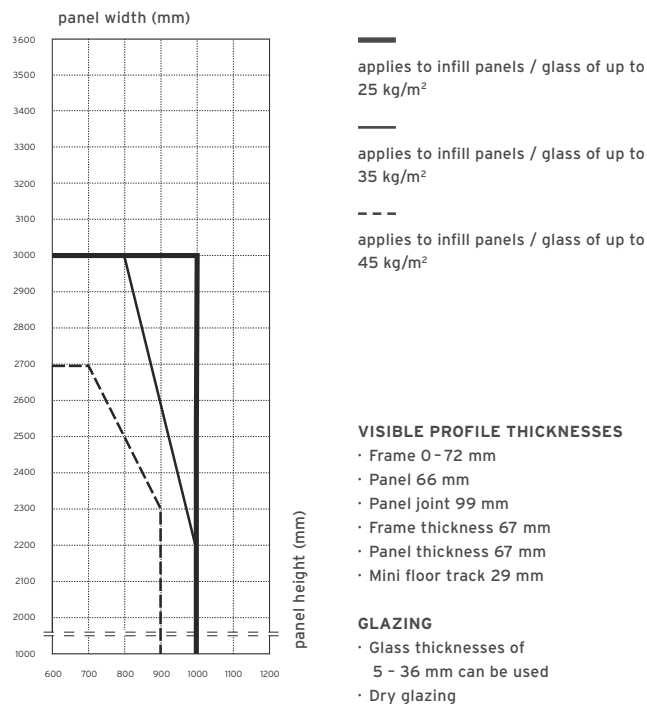
Note: Details depend on version and glass

Highline Features

	Resistance to wind load to DIN EN 12210	B4
	Protection against driving rain to DIN EN 12208	9A
	Air permeability to DIN EN 12207	3
	Dauerfunktion nach DIN EN 12400	2
	Burglar resistance to DIN EN 1627-1630	RC2/ RC2N
	Sound insulation class to DIN EN ISO 10140-2	R' _w bis 45 dB
	Thermal performance of windows, doors and shutters to DIN EN ISO 10077-1	U _w ≥ 0,8 W/m ² K

Note: Details depend on version and glass

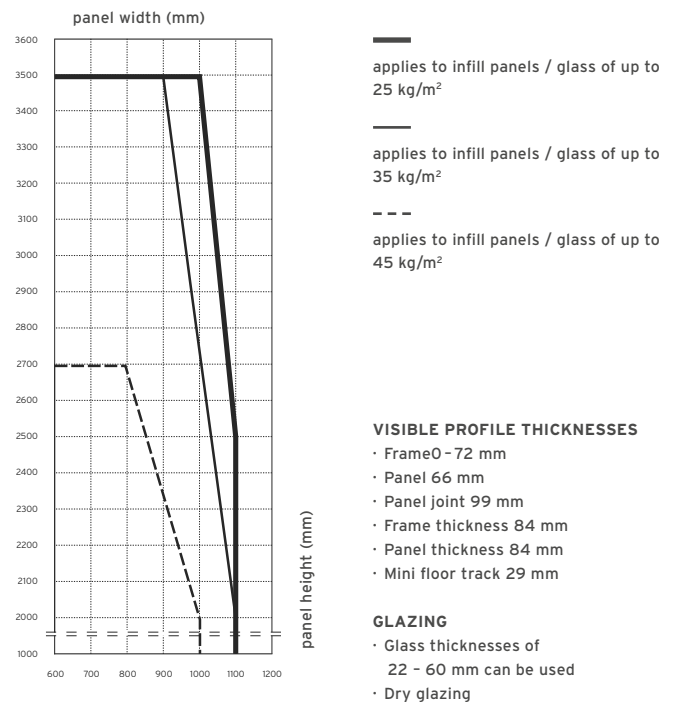
Ecoline Panel Sizes



Note:

- Dimensions include frame portion
- Recommend horizontal division bars for system heights ≥ 2,550 mm
- Max. panel weight 90 kg
- Min. panel width 600 mm (if left-right side sliding 550 mm) for paired versions
- Max. installation height for systems with opening panel 2,700 mm
- Wind and impact loads may limit the panel size
- Special sizes on request

Highline Panel Sizes



Note:

- Dimensions include frame portion
- Recommend horizontal division bars for system heights ≥ 2,550 mm
- Max. panel weight 110 kg
- Min. panel width 800 mm (if left-right side sliding 650 mm) for paired versions
- Max. installation height for systems with opening panel 2,700 mm
- Wind and impact loads may limit the panel size
- Special sizes on request

